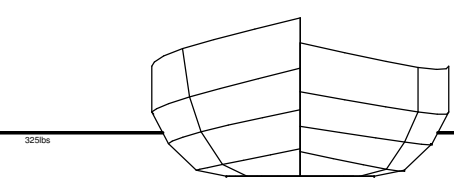
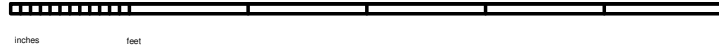
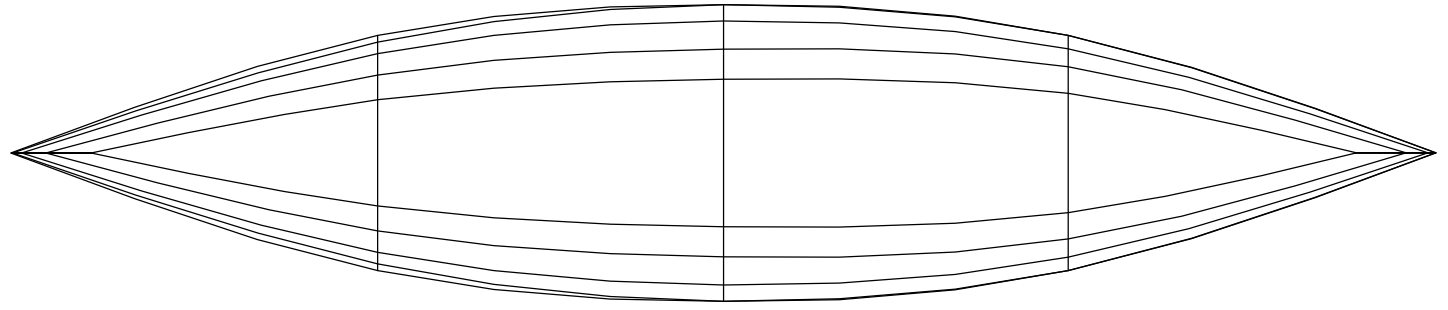


Cinderella

144 by 30in flat-bottomed, round-sided, elegant but easy to build canoe



Gap filled at bows and stern using either gunwale or inwale material, cut and tried to fit neatly (it will be visible!)

Hull - 3/8in marine ply
 Gunwale - 3/4in material
 Gapped inwale - 3/4in (or same as inwale and gunwale)
 Inwale - 3/4in pine or spruce

Shoulder carrier - 1.5 by 1.5 (may be larger to taste) in pine or spruce shaped for carrying comfort and clamped and glued under inwale

Fillet made from doubled hull material, cut and shaped to fit under inwale, then clamped and glued into place

